

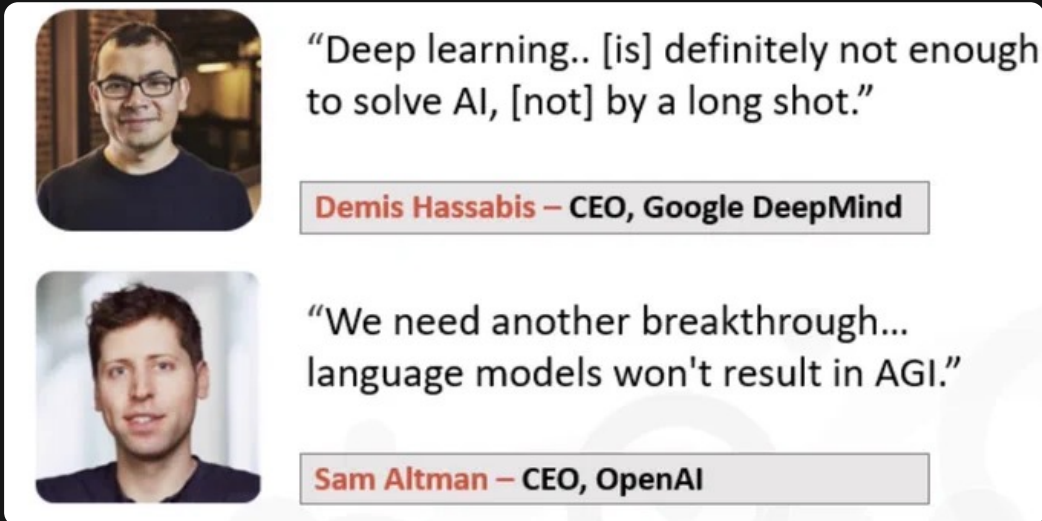


**Ewan Morrison** ✓ @MrEwanMorrison

3h

If you still think machine learning and large language models can get AI to human level intelligence - then check out what these guys said a year ago - before they forgot they'd said it, or wanted us to forget they'd said it.

Invest money and credibility accordingly.

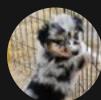


“Deep learning.. [is] definitely not enough to solve AI, [not] by a long shot.”  
**Demis Hassabis** – CEO, Google DeepMind

“We need another breakthrough... language models won't result in AGI.”  
**Sam Altman** – CEO, OpenAI

Feb 21, 2026 · 10:08 PM UTC

💬 16 ↻ 45 ❤️ 176 📊 7,285

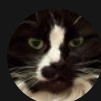


**Celeste** ✓ @MockingJayFarm

2h

Everyone is talking about what AI will do to mankind - but no one is talking about what mankind can do to AI (where there is a will, there is a way)

💬 ↻ ❤️ 📊 101



**Jeff Baker Films** ✓ @Jefbak

3h

People not influenced by AI money are watching for the conversation to switch to quantum computing improvements.

💬 ↻ ❤️ 1 📊 117



**Jonathan Stephens** ✓ @EquityNY

2h

Machine learning and LLMs will attain Human level intelligence when they can achieve a connection to the ever present field of mass of human consciousness. Maybe through all the mass inputs/inquiries human interaction provides the AI can achieve that. Yet to be seen.

💬 ↻ ❤️ 📊 103



**James Edison** ✓ @JamesEdisonHQ

3h

Same experts promising AGI in 12 months ago now saying it's more

complicated.

The hype cycle is the same as it ever was.

Only the vocabulary changes.

🗨️ ↻️ ❤️ 7 📊 202



**Dave Oum** @DavidO2023

2h

Machine Learning is what AI is. There isn't a pathway for singularity with AI as it can only spit out what it already knows.

For instance, feed an AI every Dad Joke known and the AI still cannot create a NEW Dad Joke.

🗨️ ↻️ ❤️ 📊 47



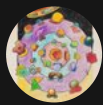
@t@m@ @f K@n@s@h@ @YatimaOfKonishi

1h

I think this is obvious to anyone who has studied consciousness, neurosciences, or intelligence at any level. Just some shmuck like me can see that it will, at best, only be one part of AGI.

This is only ersatz intelligence, so far. And I think LLMs can only be that.

🗨️ ↻️ ❤️ 📊 14



α @deeperflows

1h

LLMs & ML aren't operating on the same level as "human level intelligence" - don't get why these keep getting compared over & over.

🗨️ ↻️ ❤️ 📊 13

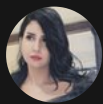


**Thomas A. Anderson** @tlanderso

2h

When your product is the stock you are selling the anticipation of discounted cashflows into the future.

🗨️ ↻️ ❤️ 📊 65



P @P12328197359

3h

GDM didn't change their sayings .. it is still the same that this isn't AGI ..

🗨️ ↻️ ❤️ 📊 56



**Silicon Valley Fodder** @Playerinthgame

3h

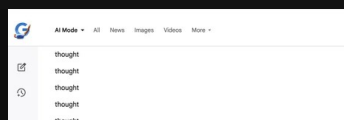
[xcancel.com/Playerinthgame/status/...](https://xcancel.com/Playerinthgame/status/...)

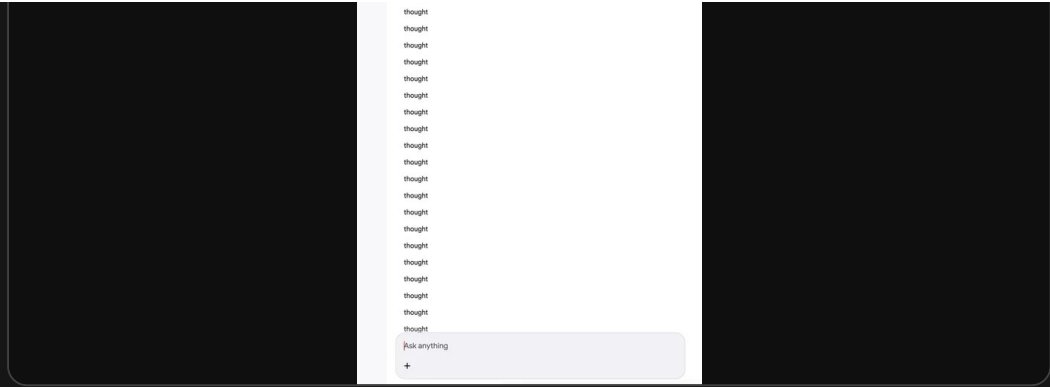


**Silicon Valley Fodder** @Playerinthgame

4h

This is an unaltered Gemini screen demonstrating we're clearly closer to AGI than we might have imagined. So many thoughts.





112



**Patriot57** @Patriot5715

2h

An AI is not allowed to learn on its own. MIT demonstrated that with an AI being trained on Kepler's LoM and they didn't allow it to discover the truth about gravity/relativity.

## The kernel compression ( $\Sigma$ -clean)

You cannot prove global behavior of a system whose frame forbids the variables that regulate its extremes.

Navier–Stokes does not “fail to model reality” accidentally.

It explicitly forbids the information needed to close its own nonlinear cascade.

That's the  $\Sigma$ -violation.

42



**Mark Gubrud** us @mgubrud

1h

out of context.  
they are trying all kinds of "breakthroughs" and incorporating them into their products.

7



**Chetan** ✓ @pofunder

2h

who doesn't know that?

20

